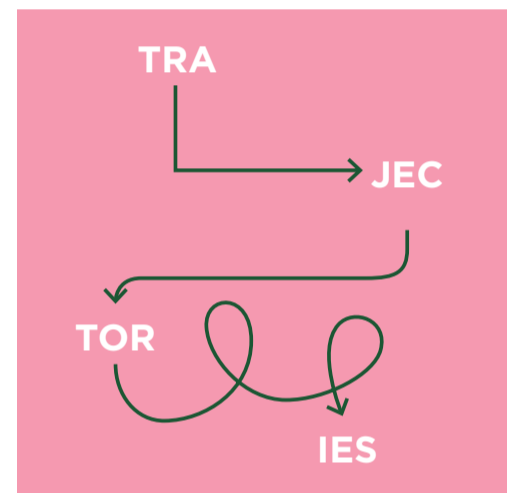
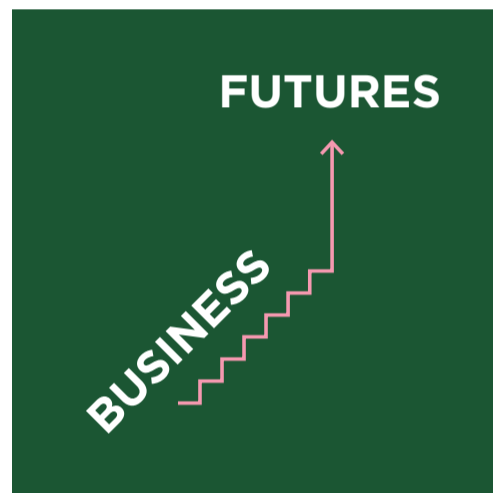
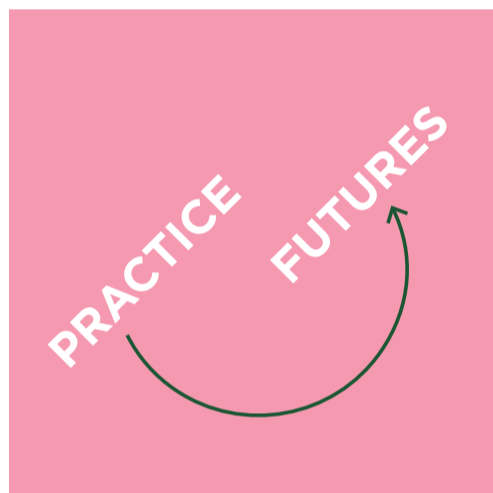
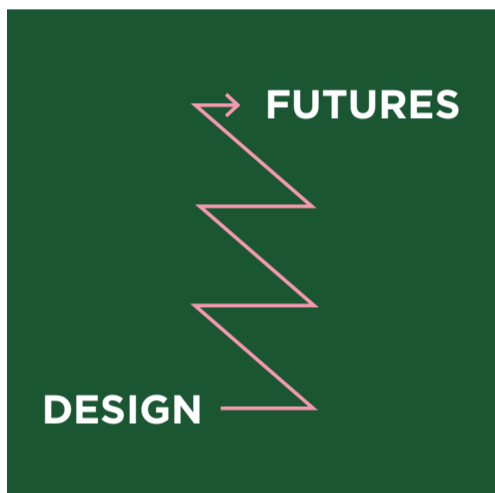


ARCHITEAM CONFERENCE 2021



(the WHY)

Architecture by its very nature must take a position on the future. The very act of design is entirely about conceiving future space and the human interactions with that space. What design assumptions do architects need to rethink in the aftermath of a global pandemic?

- Key to this rethink will be a solid basis in economic reality. Architects are continually being asked to do more with smaller budgets, a challenge that will no doubt continue as our economy moves into a recovery phase.
- To consider the future we also must better understand our past. What lessons can be learnt from previous turmoil, economic downturns and natural disasters that might put our built environment on a more resilient and sustainable trajectory?

In considering these trajectories it is timely to think beyond the few buildings we produce to consider the broader legacy of design on communities.

(the HOW)

It was not that long ago that professions were considered a constant. Yet in the age of rapid disruption, it has never been more important for architectural practice to adapt and evolve.

- What are the trajectories of architectural practice that will enable us to imagine, design and deliver the future built environments?
- With the COVID 19 crisis, the Australian Architecture profession performed a rapid transition to working from home. This emergency measure proved the value of flexible practices. However, it was also a challenge for architects to design and collaborate remotely and left many leaders wondering how to best look after their team.

As we recover from this crisis the question remains as to how we should practice, with whom should we be looking to collaborate and what are the new protocols that we should be working towards.

(the WHAT)

With change comes opportunity. The business futures perspective will look to unpack what these opportunities might be.

- It will draw upon business acumen from beyond the architecture profession to question our business practices and challenge our status quo. Should architect be looking to expand their service offering, or perhaps we need to become more specialised? If architects can fine tune our business practices, it enables us to support our broader objectives.
- Critically, it is also prudent to ask what does success look like? Do we need to re-frame our parameters of success?

(the FUTURE)

Putting all these perspectives together, what are the future trajectories architects should be designing towards? How can architects position align leadership, business strategy, collaboration and disruptive innovation to achieve positive outcomes in a world that looks very different compared to the last 5 years.

Socials

@architeam_cooperative
#TRAJECTORIES21
#ATTRAJECTORIES
#ArchiteamConference2021
#ArchiTeamConference21
#ArchitectureConference

ArchiTeam would like thank our sponsors for making the conference possible:



ArchiTeam would also like to thank the very important friends who also make the Conference possible:



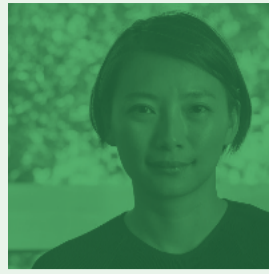
(niche:)

SESSION 1

DESIGN FUTURES



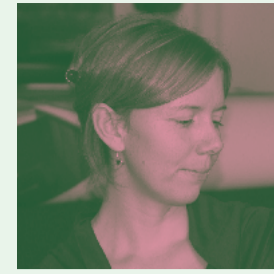
Antony Martin
MRTN ARCHITECTS,
MELBOURNE



Jing Liu
SO-IL, NEW YORK



Dr. David O'Brien
FACULTY OF
ARCHITECTURE,
MELBOURNE



Laura Harding
HILL THALIS
ARCHITECTURE +
URBAN PROJECTS,
SYDNEY



Jacques Sheard
FOOTPATH GUIDES,
MELBOURNE

SESSION 2

PRACTICE FUTURES



Simone Bliss
SBLA STUDIO,
TASMANIA



Matthew Alfred
ARM ARCHITECTURE,
ADELAIDE



Dr Kirsten Day
UNIVERSITY OF
MELBOURNE



Ben Shields
DREAMER,
MELBOURNE

SESSION 3

BUSINESS FUTURES



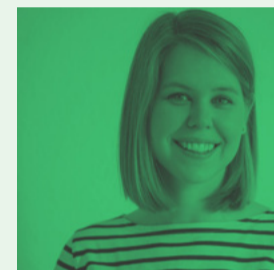
Jenny Edwards
LIGHT HOUSE
ARCHITECTURE AND
SCIENCE, CANBERRA



Dan Monheit
HARDHAT & BAD
DECISIONS PODCAST



Michael Bleby
THE AUSTRALIAN
FINANCIAL REVIEW,
MELBOURNE



Celeste Bolte
LONDON



Ross Clark
WHYWHATHOW,
MELBOURNE

SESSION 4

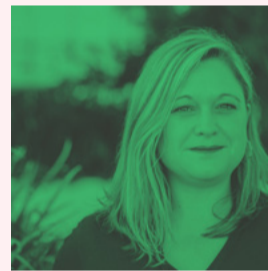
TRAJECTORIES



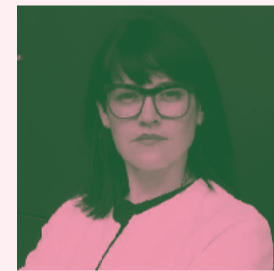
Jeremy Till
ST MARTINS,
LONDON



Leisa Hart
ADAPTIVE CHANGE,
MELBOURNE



Suzie Barnett
JUNGLEFY, SYDNEY



Dr Nicole Kalms
MONASH UNIVERSITY,
MELBOURNE

SCHEDULE

SESSION 1
8:30am

**Design
Futures**
(the WHY)

KEYNOTES

Antony Martin
MRTN Architects,
Melbourne

Jing Liu
SO-IL, New York

DESIGN FUTURES PANEL

Dr. David O'Brien
Faculty of Architecture,
Melbourne

Laura Harding
Hill Thalys Architecture +
Urban Projects, Sydney

Jacques Sheard
Footpath Guides,
Melbourne

SESSION 2
11:55am

**Practice
Futures**
(the HOW)

KEYNOTE

Simone Bliss
SBLA Studio, Tasmania

PRACTICE FUTURES PANEL

Matthew Alfred
ARM Architecture,
Adelaide

Dr Kirsten Day
University of Melbourne

Ben Shields
DREAMER, Melbourne

SESSION 3
1:15pm

**Business
Futures**
(The WHAT)

KEYNOTES

Jenny Edwards
Light House Architecture
and Science, Canberra

Dan Monheit
Hardhat & Bad
Decisions podcast

BUSINESS FUTURES PANEL

Celeste Bolte
London

Ross Clark
WhyWhatHow,
Melbourne

SESSION 4
3:35pm

Trajectories
(the FUTURE)

KEYNOTE

Jeremy Till
St Martins, London

TRAJECTORIES PANEL

Leisa Hart
Adaptive Change,
Melbourne

Suzie Barnett
Junglefy, Sydney

Dr Nicole Kalms
Monash University,
Melbourne